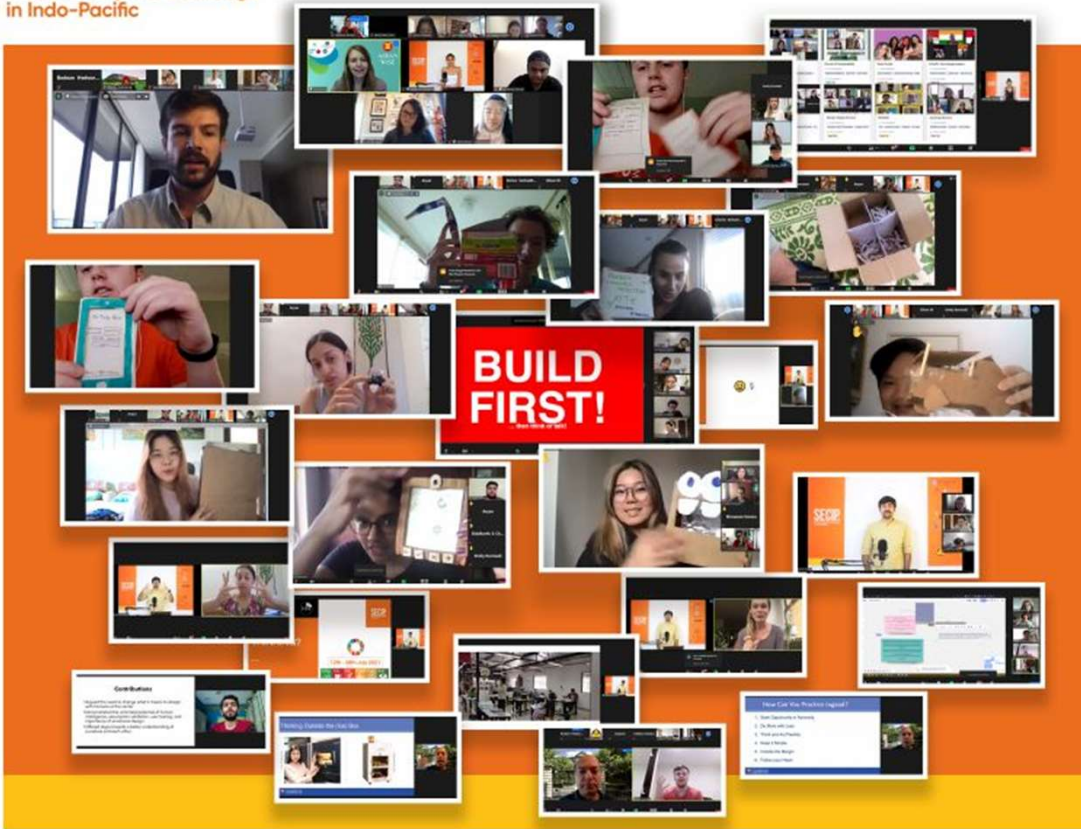


SECIP.

Social Enterprise Challenge
in Indo-Pacific



Social Entrepreneurship in the Indo-Pacific (SECIP)

Associate Professor Ijlal Naqvi, Singapore
Management University

Dr Bodean Hedwards, Monash University



CONDITIONS FOR GLOBAL LEARNING



Broad commitment to transformative, international experiences

Existing appetite for innovation in education offers at Faculty and University level

Increased momentum around interdisciplinary programming

Impact of COVID-19 on existing international education programs

Partner interest and commitment to international education programs

Student motivation to continue to engage internationally during travel restrictions

A VIRTUAL START-UP INCUBATOR: SOCIAL ENTERPRISE CHALLENGE IN THE INDO-PACIFIC (SECIP)

SECIP is a 2 week virtual, experiential initiative that gives students **hands-on experience in establishing a social enterprise or solution** that can have immediate social impact.

Based on the principles of **design-thinking, frugal innovation** and **rapid prototyping**, the program focuses on creating tangible solutions to local sustainability challenges.

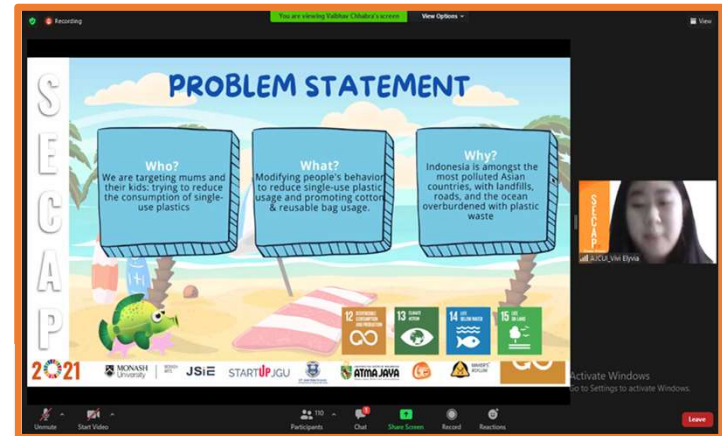
In cross-cultural, interdisciplinary teams, students engage in an intensive model incubator program.

- Students undertake a series of **in-depth panel discussions** with leaders in the business, government and non-government sector,
- participate in the **hands-on skills bazaars**, developing skills in app design, augmented reality, 3D printing
- and work with **leading industry mentors** from around the world to better understand contemporary challenges, develop and test their ideas and assumptions, and then make, break and re-create solutions.

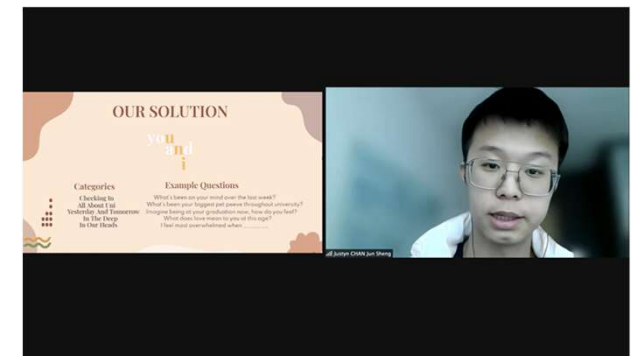
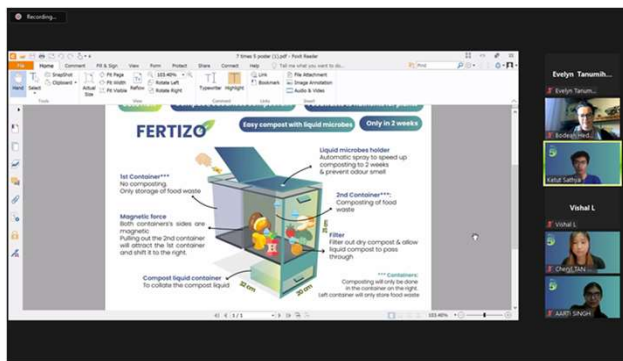
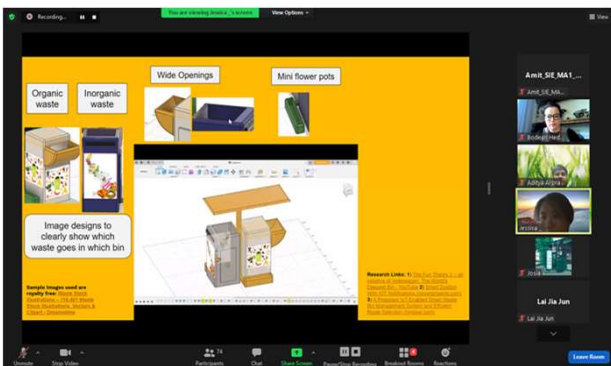
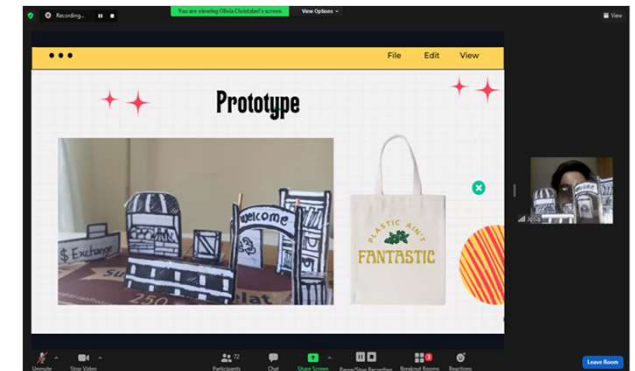
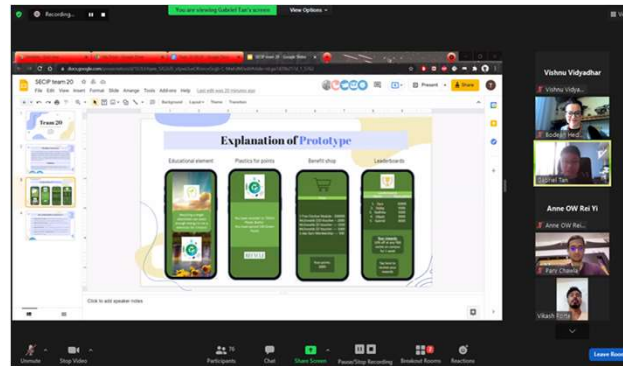
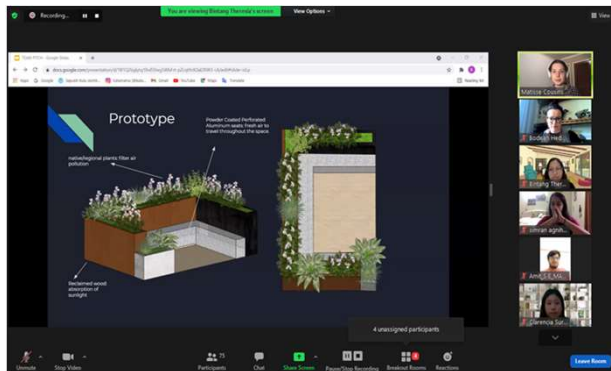
A partnership between Monash University, Maker's Asylum, O.P. Jindal Global University, Atma Jaya Catholic University of Indonesia, Singapore Management University & Tata Institute of Social Science



MAKER'S
ASYLUM



BUILDING A NETWORK: HANDS ON EXPERIENCE BUILDING SOLUTIONS



CREATING REGIONAL IMPACT: ENHANCING ACCESS TO INTERNATIONAL EDUCATION

The underpinning vision is to **mobilise a generation of young people** that can lead solutions to the world's most pressing challenges facing the Indo-Pacific region.

This is part of a commitment to ensuring that all students, regardless of their financial background, can access transformative international education.



MAKER'S
ASYLUM™



NEXT STEPS

INTEGRATED, ACCESSIBLE, REGION WIDE SOLUTION FOCUSED EDUCATION

- Develop a **scalable governance and delivery model** to allow students from across the region and global participation.
- Continue to improve aspects of **diversity and inclusion** across the board in a non-COVID context.
- Continue to **develop and foster the associated network** of universities, businesses, start-ups, social enterprises, makers spaces and other organisations leading solutions to our most pressing sustainability challenges.
- Develop **stronger pathways** in to further education, and extra curricular accelerator initiatives in Australia and across the region.



MAKER'S
ASYLUM



DELIVERY MODEL:

INNOVATION IN CO-DESIGN & DELIVERY



Steering Committee is comprised of university and industry partners and is responsible for the design and delivery of the SECIP program:

- Development of global curriculum, including pre-program content and assessment structure and approach
- Delivery of the program, including providing guest lectures, expert panellists, mentors and student support
- Academic support for student assessment and grading

There are a **two ways for students to participate:**

- University joins Steering Committee and program is adopted as a for-credit program, with resources dedicated to the design and delivery.
- Students participate via an Exchange



MAKER'S
ASYLUM™

